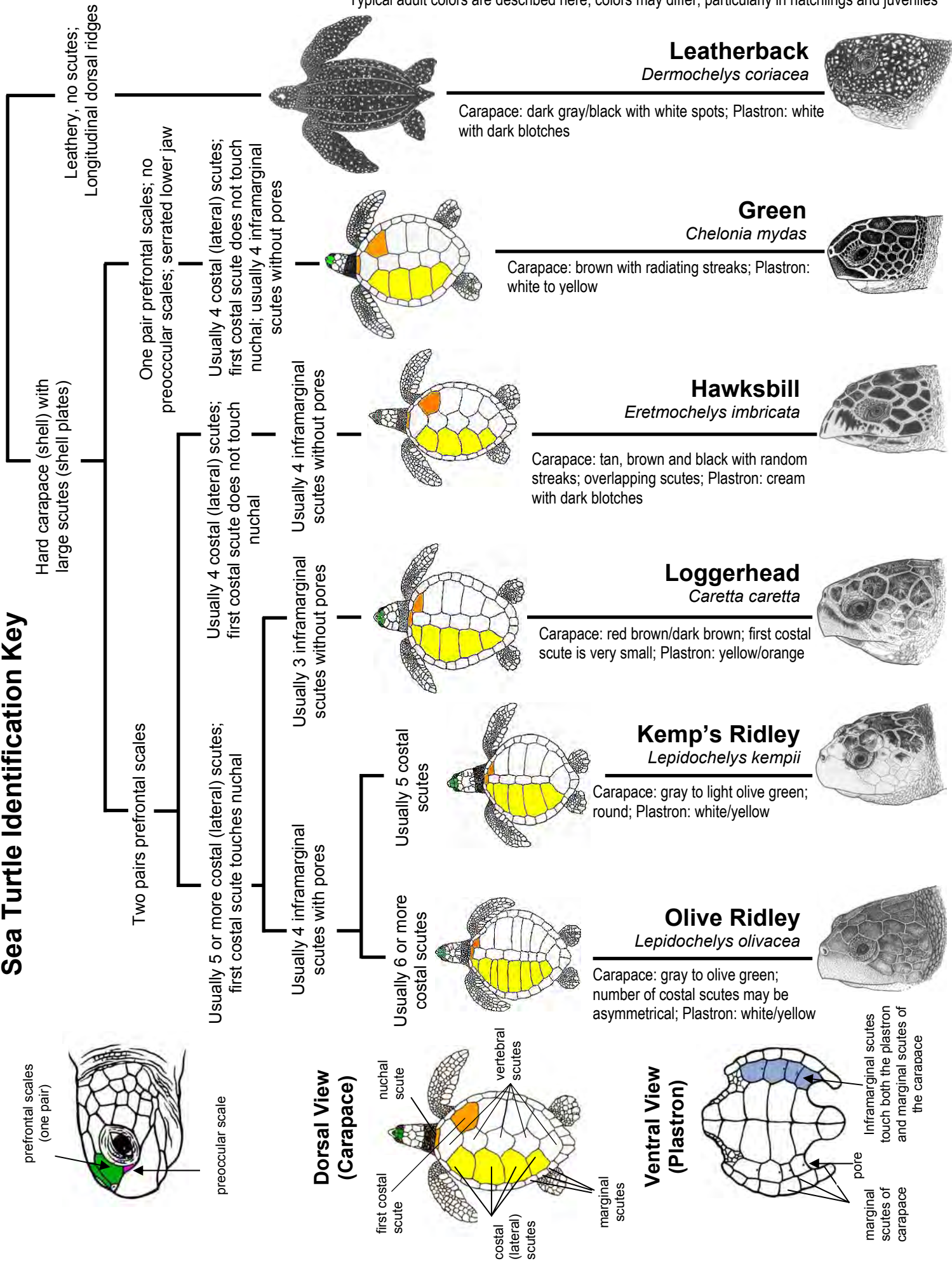
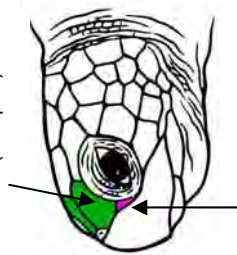


# Sea Turtle Identification Key

Typical adult colors are described here; colors may differ, particularly in hatchlings and juveniles

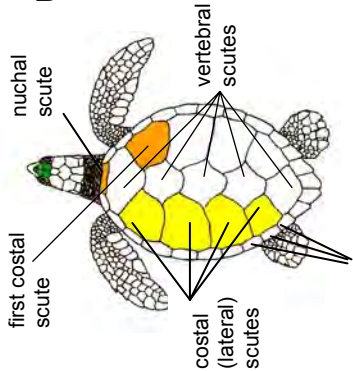


prefrontal scales (one pair)

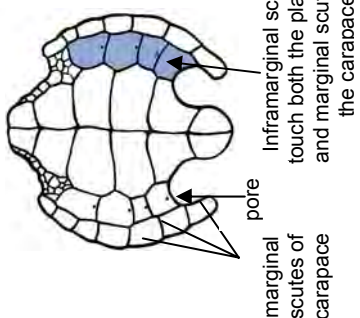


preoccular scale

## Dorsal View (Carapace)



## Ventral View (Plastron)





**Leatherback, *Dermochelys coriacea*** (Spanish: Baula, Tortuga Laud, Tora; French: Tortue Luth; Portuguese: Tartaruga Gigante, Tartaruga-de-couro)  
**Adult Size Range: Length:** 165-190+ cm/ 65-75+ in; **Weight:** 400-500 kg females, males to 900 kg/ 885-1985 lb  
**Range:** All oceans, sub-arctic to tropical; mainly pelagic oceanic (surface dwelling in the open ocean) but found in bays and over continental shelves

**Green, Black\*, *Chelonia mydas*** (Spanish: Tortuga Verde, Tortuga Blanca; Tortuga Negra, Prieta; French: Tortue Verte; Portuguese: Tartaruga Verde, Aruanã)  
**Adult Size Range: Length:** 90-120 cm/ 35-45 in; **Weight:** 120-230 kg/ 265-510 lb  
**Range:** All subtropical and tropical seas; bays and coastal waters; black form restricted to eastern Pacific Ocean; pelagic oceanic (surface dwelling in the open ocean) small juveniles; benthic neritic (bottom dwelling in coastal waters) large juveniles and adults  
\*The status of the black turtle or eastern Pacific green turtle as *Chelonia agassizii* or *C. mydas agassizii* as a distinct species or subspecies is not supported, although it is often treated as such.

**Flatback, *Natator depressus*** (Spanish: Kikila, Tortuga Franca Oriental; French: Chelonée à dos Plat; Portuguese: Tartaruga de Casco Achatado)  
**Adult Size Range: Length:** to 100 cm/ 40 in; **Weight:** to 90 kg/ 200 lb  
**Range:** Tropical coastal Australia, including the waters up to Irian Jaya, Papua New Guinea and Java; pelagic neritic (surface dwelling in coastal waters)

**Hawksbill, *Eretmochelys imbricata*** (Spanish: Tortuga Carey; French: Tortue Imbriquée, Tortue Caret; Portuguese: Tartaruga-de-pente, Tartaruga de Escamas, Tartaruga Bico de Falcão, Tartaruga Verdadeira)  
**Adult Size Range: Length:** 90-110+ cm/ 35-45+ in; **Weight:** 60-80 kg/ 130-175 lb  
**Range:** All oceans; tropical waters, rarely subtropical; reef areas; pelagic oceanic (surface dwelling in the open ocean) small juveniles; benthic neritic (bottom dwelling in coastal waters) large juveniles and adults

**Loggerhead, *Caretta caretta*** (Spanish: Caguama, Amarilla, Cabezona, Tortuga Boba; French: Caouanne; Portuguese: Tartaruga Boba, Tartaruga Comum, Tartaruga Careta, Tartaruga Cabeçuda, Tartaruga amarela, Careba Dura, Careba Amarela)  
**Adult Size Range: Length:** 90-130 cm/ 35-50 in; **Weight:** 100-180 kg/ 220-400 lb  
**Range:** All oceans; primarily subtropical and temperate waters; often associated with structures (i.e., reefs, wrecks, platforms); pelagic oceanic (surface dwelling in the open ocean) small juveniles; benthic neritic (bottom dwelling in coastal waters) large juveniles and adults

**Kemp's Ridley, *Lepidochelys kempii*** (Spanish: Tortuga Lora, Cotorra; French: Tortue de Kemp; Portuguese: Tartaruga de Kemp)  
**Adult Size Range: Length:** to 70 cm/ 28 in; **Weight:** 35-50 kg/ 80-110 lb  
**Range:** Gulf of Mexico, eastern USA, rarely in eastern North Atlantic; coastal, primarily subtropical and temperate waters; pelagic oceanic (surface dwelling in the open ocean) small juveniles; benthic neritic (bottom dwelling in coastal waters) large juveniles and adults

**Olive Ridley, *Lepidochelys olivacea*** (Spanish: Tortuga Golfina, Tortuga Olivacea, Parlama; French: Tortue Olivâtre; Portuguese: Tartaruga Oliva, Tartaruga Olivácea, Tartaruga Pequena, Xibirro)  
**Adult Size Range: Length:** 70-80 cm/ 28-32 in; **Weight:** 35-60 kg/ 80-130 lb  
**Range:** Pacific, Indian and Atlantic Oceans, rarely in eastern North Atlantic; pelagic oceanic (surface dwelling in the open ocean); most often in tropical waters

#### Sources:

Seaturtle.org

Pritchard, P. C. H. and Mortimer, J. A. (1999) Taxonomy, External Morphology, and Species Identification. pp. 21-38. In: Eckert, K.L., K.A. Bjorndal, F.A. Abreu-Grobois, and M. Donnelly (Editors). 1999. Research and Management Techniques for the Conservation of Sea Turtles. IUCN/SSC Marine Turtle Specialist Group Publication No. 4. (for further details see <http://www.iucn-mtsg.org/publications.htm>)

Wyneken, J. The Anatomy of Sea Turtles. 2001. U.S. Department of Commerce NOAA Technical Memorandum NMFS-SEFSC-470, 172 pp.

Sea turtle figures used by permission of the Marine Turtle Specialist Group ([iucn-mtsg.org](http://www.iucn-mtsg.org)), Peter Pritchard and Jeanette Wyneken  
Illustrations by Tom McFarland and Dawn Witherington